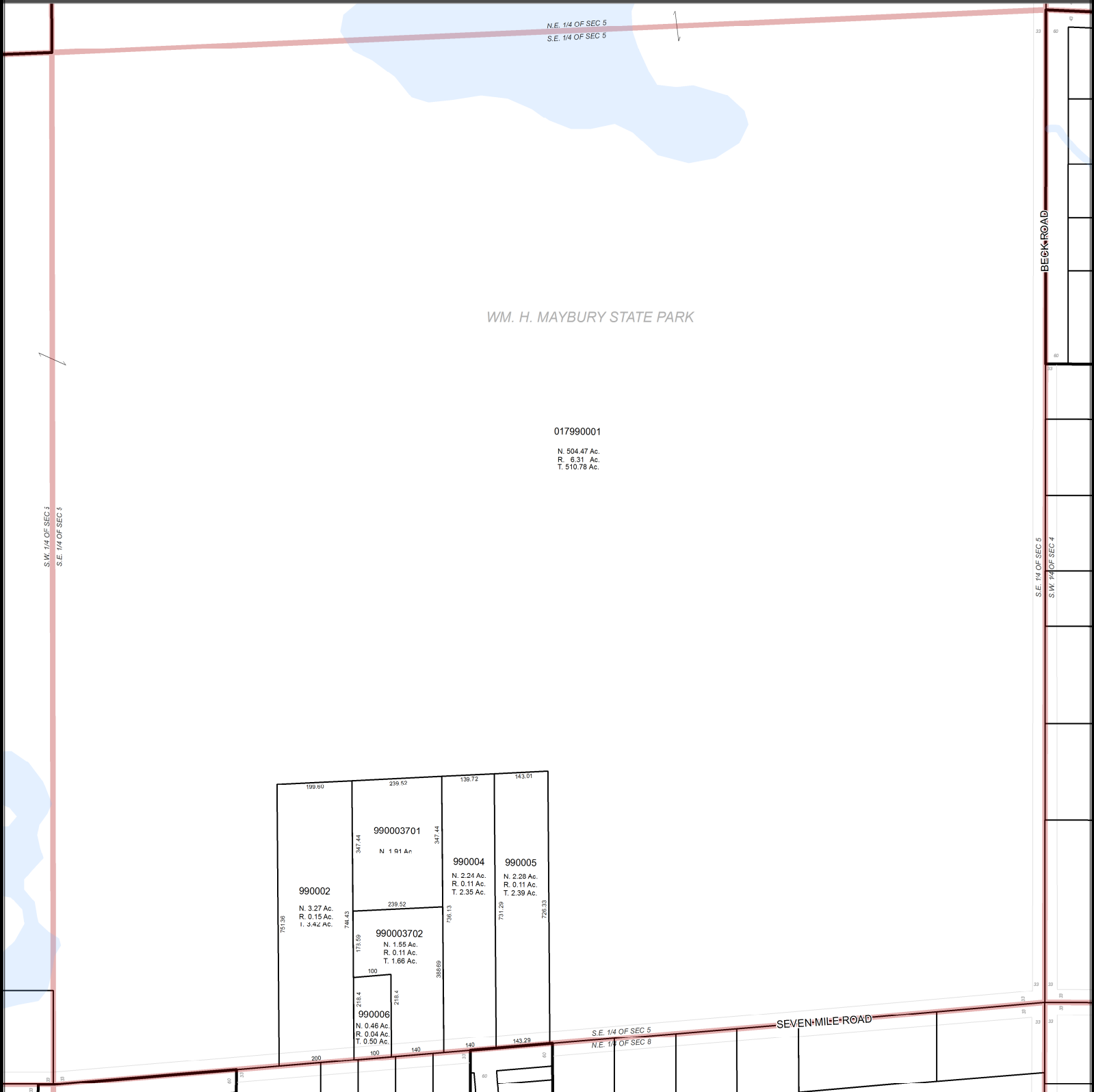


# CHARTER TOWNSHIP OF NORTHVILLE

## COUNTY OF WAYNE, STATE OF MICHIGAN

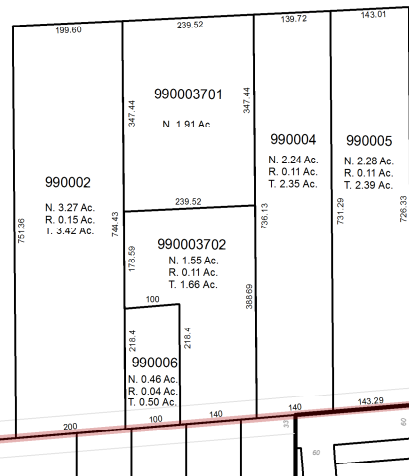
### T. 1 S. R. 8 E.



N.E. 1/4 OF SEC 5  
S.E. 1/4 OF SEC 5

WM. H. MAYBURY STATE PARK

017990001  
N. 504.47 Ac.  
R. 6.31 Ac.  
T. 510.78 Ac.



### S.E. 1/4 SECTION 5

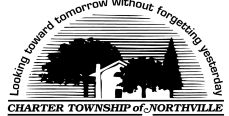


#### PARCEL IDENTIFICATION NUMBER

TWP CODE PAGE NO. SUB NO. LOT NO. SPLIT/COMB.  
77 065 02 0010 000

#### PAGE LOCATOR

22	21	18	17	14	13	6	5	2	1
23	24	19	20	15	16	7	8	3	4
26	25	30	29	34	33	38	37	42	41
27	28	31	32	35	36	39	40	43	44
70	69	66	65	62	61	58	57	54	53
71	72	67	68	63	64	59	60	55	56



FOR PARCEL INFORMATION AND LEGAL DESCRIPTIONS  
PLEASE VISIT OUR WEBSITE

[WWW.TWP.NORTHVILLE.MI.US](http://WWW.TWP.NORTHVILLE.MI.US)

UPDATED: JANUARY 1, 2013

CONTRACTOR'S DATE PROVIDES A VISUAL REPRESENTATION ONLY. NORTHVILLE TOWNSHIP DOES NOT ASSUME ANY LIABILITY OR LIABILITY TO THE ACCURACY, AVAILABILITY, USE OR MISUSE OF THE INFORMATION PROVIDED. MAPS HAVE BEEN PROVIDED BY THE CHARTER TOWNSHIP OF NORTHVILLE. ALL RIGHTS RESERVED. NO PART OF THIS MAP MAY BE REPRODUCED OR TRANSMITTED IN ANY FORM OR BY ANY MEANS, WITHOUT WRITTEN CONSENT.