

CHARTER TOWNSHIP OF NORTHVILLE

COUNTY OF WAYNE, STATE OF MICHIGAN

T. 1 S. R. 8 E.

N.W. 1/4 OF SEC 5
S.W. 1/4 OF SEC 6

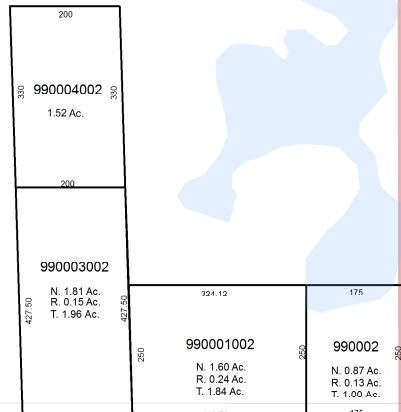
WM. H. MAYBURY STATE PARK

017990001

N. 504.47 Ac.
R. 8.31 Ac.
T. 510.78 Ac.

S.E. 1/4 OF SEC 6
S.W. 1/4 OF SEC 5

S.W. 1/4 OF SEC 5
S.E. 1/4 OF SEC 6



SEVEN-MILE ROAD

S.W. 1/4 OF SEC 5

N.W. 1/4 OF SEC 8

S.W. 1/4 SECTION 5



PARCEL IDENTIFICATION NUMBER

TWP CODE PAGE NO. SUB NO. LOT NO. SPLIT/COMB.
77 065 02 0010 000

PAGE LOCATOR

22	21	18	17	14	13	6	5	2	1
23	24	19	20	15	16	7	8	3	4
26	25	30	29	34	33	38	37	42	41
27	28	31	32	35	36	39	40	43	44
70	69	66	65	62	61	58	57	54	53
71	72	67	68	63	64	59	60	55	56
51	52	53	54	55	56	57	58	59	60



FOR PARCEL INFORMATION AND LEGAL DESCRIPTIONS
PLEASE VISIT OUR WEBSITE

WWW.TWP.NORTHVILLE.MI.US

UPDATED: JANUARY 1, 2013

GENERIC MAP DATA PROVIDED AS A GENERAL REPRESENTATION ONLY. NORTHVILLE TOWNSHIP DOES NOT ASSUME ANY LIABILITY OR LIABILITY TO THE ACCURACY, AVAILABILITY, USE OR MISUSE OF THE INFORMATION PROVIDED. MAPS HAVE BEEN PRODUCED BY THE CHARTER TOWNSHIP OF NORTHVILLE. ALL RIGHTS RESERVED. NO PART OF THIS MAP MAY BE REPRODUCED OR TRANSMITTED IN ANY FORM OR BY ANY MEANS, WITHOUT WRITTEN CONSENT.